

# Pragma Telnet Server

Remote Management. Remote Applications. Remote Control.

## Pragma Systems – Your Telnet Market Standard™

Pragma Systems offers the industry's most feature complete Telnet Server for use across any Windows environments.

**Telnet with SSL Supported!**

### Telnet Server Features

- Manage Windows & Exchange servers with **Microsoft PowerShell** and alternative shells
- **Secure Sockets Layer (SSL) support** to ensure data security in telnet sessions
- Designed and optimized to enable RF or handheld units to access and run programs from Windows
- Supports all Microsoft Windows languages
- Supports over 1,000 concurrent telnet sessions
- Runs, manages and controls any character or console mode program, including edit, command, vi, emacs, pmon, net, ftp, lynx, perl and shells imported from Unix

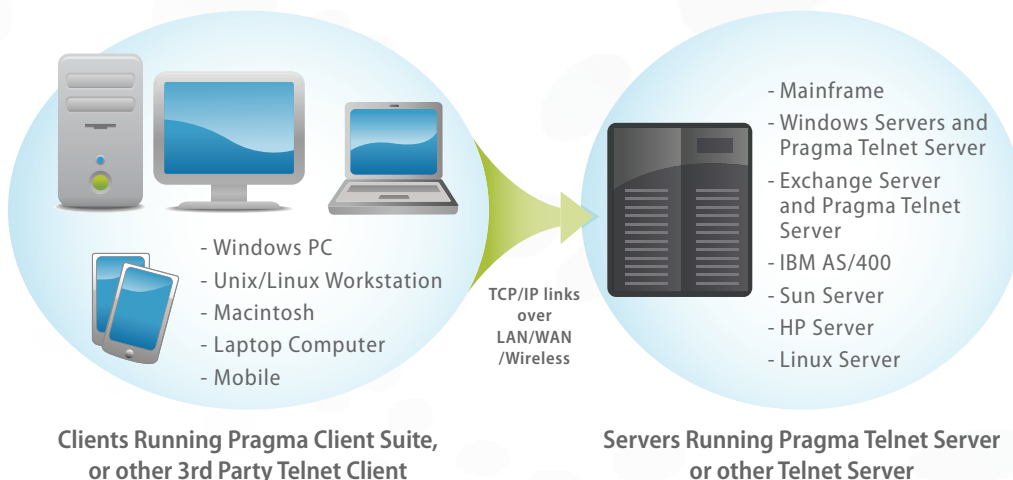
### Centralized server management

- Easy-to-use graphical or command line management programs that manage server and user settings and sessions
- Central enterprise configuration allows administrators to configure the system in one location and deploy the settings to all network servers

### Advanced usability features

- Fully configurable environment
- Direct interaction between the user application and the client that exactly mimics server-side operation
- Automatic Wrap Technology helps character or console based programs that have difficulty running in a telnet or terminal session

### Connectivity with Telnet Protocol



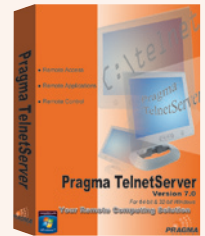
### At a Glance

Pragma Telnet Server for Windows is an advanced and high-performance telnet server that lets you manage Windows computers and networks from anywhere on the Internet. Intuitive and easy to use, Pragma Telnet Server contains all of the functionality you need to efficiently access, manage and use other systems remotely:

- **Works with Windows PowerShell**
- **Telnet Server (Telnetd)**
- **Inet Server (Inetd)**
- **Remote Shell Server (rshd)**
- **Remote Execute Server (rexecd)**
- **Multiple management utilities and productivity-enhancing features**

Pragma Telnet Server for Windows uses innovative, patent-pending technology to bring you the fastest, most scalable and feature-complete telnet server software for your remote network access applications. While it performs optimally with Pragma Fortress SSH Client Suite and Stay-Linked™, the software allows multiple users from any telnet client on any operating system to run console/character applications from Windows.

Unlike open source alternatives, which are not designed for enterprise use, Pragma Telnet Server works seamlessly out of the box, contains a robust feature set, scales to accommodate more than 1000 concurrent sessions and is customizable to meet your unique environmental and application needs.



# Remote Connectivity... Done Right



## Pragma Telnet Server Benefits

- **Improves your productivity and saves you time** – Pragma Telnet Server for Windows is packed with productivity-enhancing functionality that automates activities.
- **Customizable, easy to use, and streamlined deployment** – You can configure the software using a dialog window or command line program. It is also easy to customize, allowing user-defined login scripts and customizable login shells.
- **Market-leading performance and scalability**– Its efficient operation and superior design make Pragma Telnet Server highly scalable; it can support over 1000 concurrent sessions, while other telnet software typically supports only 30-40 sessions.
- **Reliable and proven** – More than a decade of engineering design and input from thousands of users have perfected Pragma Telnet Server. Just install it, configure it to suit your preferences and you will never have to think about it again.
- **Supports latest technology and broad range of platforms** – Pragma Telnet Server runs in Windows 2019/2016/2012 R2/2012/2008 R2/2008/2003 servers & Windows 11/10/8/7/ Vista/XP clients and supports 32-bit and 64-bit processors.
- **Flexible Telnet Client support** – It is optimized for use with handheld RF devices and includes special configuration and feature support for handheld clients and devices.
- **Full-featured** – Pragma Telnet Server supports ANSI, VTXXX, and WYSE terminal emulation; fully supports both wired and wi-fi networks; and includes complete auditing and logging capabilities.
- **Best value** – Although open source alternatives do not cost money up front, the extra time you spend installing, maintaining, and using them far outweighs any initial “cost savings.”

## Specifications

- Runs in Windows 2019/2016/2012 R2/2012/2008 R2/2008/2003 servers and Windows 11/10/8/7/Vista/XP clients
- x86 32-bit, x64 64-bit
- 25 MB available hard disk space
- Fully supports any RFC compliant telnet client
- Microsoft NTLM authentication support
- Telnet, Telnet with SSL
- Stay-Linked™ Ready



Microsoft  
Partner

Silver Application Integration  
Silver Application Development

## How to Order

Visit Pragma's web site at:  
<http://www.pragmasys.com> to order online or to download a FREE fully functional evaluation copy.

To order from USA call: 1-800-224-1675

International sales call: 1-512-219-7270

Fax orders to: 1-512-219-7110

Contact Pragma for pricing and quantity discount information.

## Pragma Systems, Inc.

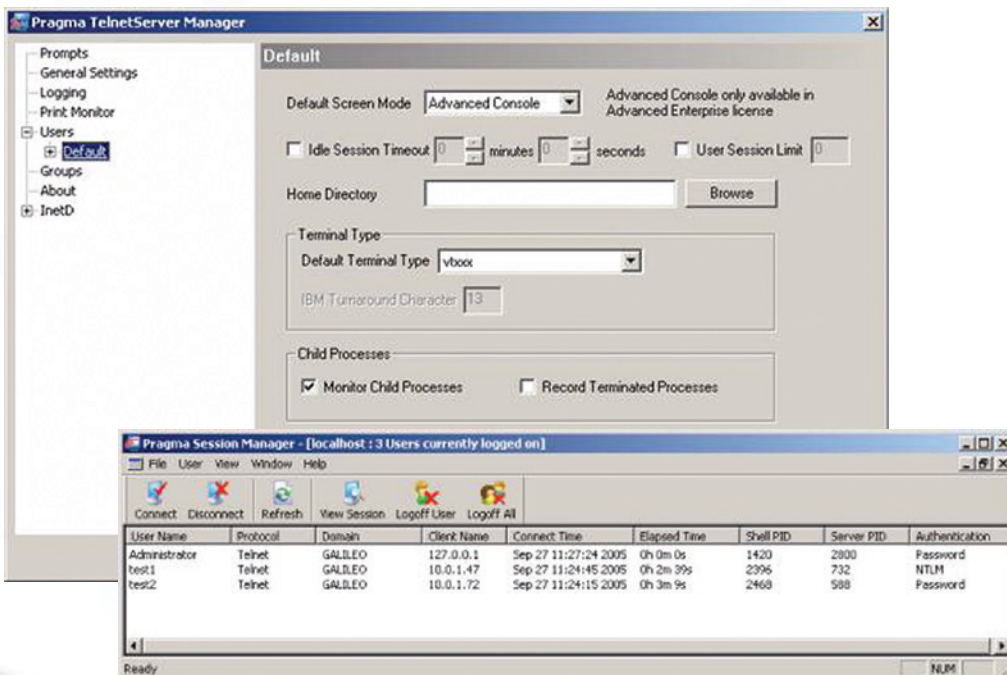
13809 Research Blvd., Suite 675  
Austin, TX 78750  
USA

Tel: 1-512-219-7270

Fax: 1-512-219-7110

Email: [sales@pragmasys.com](mailto:sales@pragmasys.com)

Website: <http://www.pragmasys.com>



Copyright © 2022 Pragma Systems, Inc. All Rights Reserved.

# Pragma Telnet Server

Remote Management. Remote Applications. Remote Control.