

Pragma Fortress SSH Server

- Secure Remote Access and Management Tool for the Windows Enterprise
- US Government Approved SSH Technology, FIPS 140-2 Certified & IPv6



- The **ONLY SSH server** to pass the US Army TIC (Technology Integration Center)
- U.S. Army Full Certificate of Networthiness (CoN)
- FIPS 140-2 Certified Certificate #3171

Pragma Fortress SSH Features:

- Manage Windows and Exchange servers with **Microsoft PowerShell** or alternative shells
- Multi-session support - SSH, SFTP, SCP within one SSH connection
- Designed & optimized to enable RF or handheld units to access & run programs from Windows
- Allows session reconnect
- Runs, manages & controls any character / console mode program, including edit, command, vi, emacs, pmon, net, ftp, perl and Unix shells
- SAPConsole support out of the box

Secure File Transfer

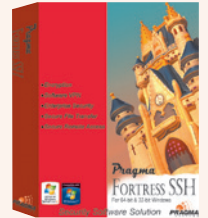
- Securely transfers files faster using SFTP or SCP – 10X increases versus competitive offerings
- Allows access by virtual directory, administrative, or user home directory

Centralized Server Management

- Easy-to-use graphical or command line management programs that manage server and user settings and sessions
- Centralized enterprise configuration allows administrators to configure the system in one location and deploy the settings to all network servers

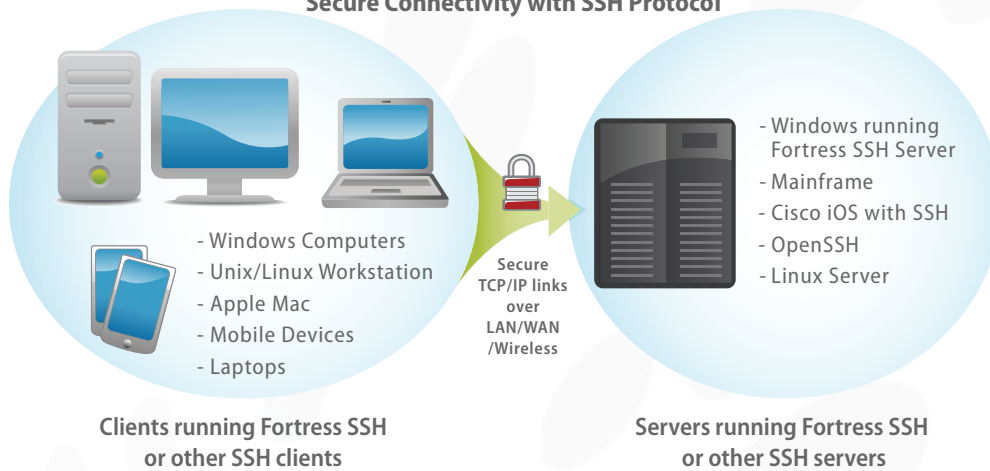
At a Glance

Pragma Fortress SSH Server for Windows uses patent-pending technology to provide the most secure, reliable, full-featured and fastest Secure Shell (SSH) server and SFTP/SCP file transfer servers.



- **FIPS 140-2 certified certificate #3171**
- **Only SSH technology implemented on Microsoft Crypto built within Windows**
- **SSH shell sessions that can run Microsoft PowerShell, cmd, Unix shells, etc.**
- **Secure file transfer (SFTP/SCP)**
- **Port Forwarding / Tunneling**
- **Performs 10 times faster in tests against leading competitors**
- **Fully supports public key, x.509, smart cards, DoD CAC**
- **IPv6 support**
- **SAPConsole support**
- **Runs in Windows 2019/2016/2012/R2/2012/2008 R2/2008/2003 servers and Windows 11/10/8/7/Vista/XP clients**

Secure Connectivity with SSH Protocol



Government Certifications

- FIPS 140-2 Certificate # 3171
- Meets all the requirements of the U.S. Army Technology Integration Center (TIC)
- Full Certificate of Networthiness (CoN 201621769) from the U.S. Army Network Enterprise Technology Command (NETCOM)

Advanced usability features

- Fully configurable environment
- Automatic Wrap Technology helps character or console based programs that have difficulty running in an ssh session
- "Named Pipes" functionality provides a programmatic interface for applications to communicate directly with client
- Allows history scroll-back and console application execution within the same session

- Public key, x.509, password, Windows GSS-API Kerberos & NTLM Active Directory authentication
- Automatically stores public keys from SSH clients to ease the setup of public key authentication

Features for RF handheld devices

- Robust session reconnect and clean-up
- Server side timeout and heartbeat features for session cleanup
- Full support for Motorola, Janam, LXE, PsionTeklogix, Intermecc, Honeywell and others
- Custom user shell
- Automatic exit after running application
- Auto-login feature
- Works with any handheld client software, but performs optimally with Pragma PocketVT and Stay-Linked™ clients

Pragma's all-in-one "Wrap" technology makes running all console programs smooth and seamless. The Advance Console feature allows "Unix like" history scroll back within the same session. Fortress SSH has an intuitive configuration management interface and allows full auditing and logging capabilities.



Secure Connectivity... Done Right



Fortress SSH/SFTP/SCP Benefits

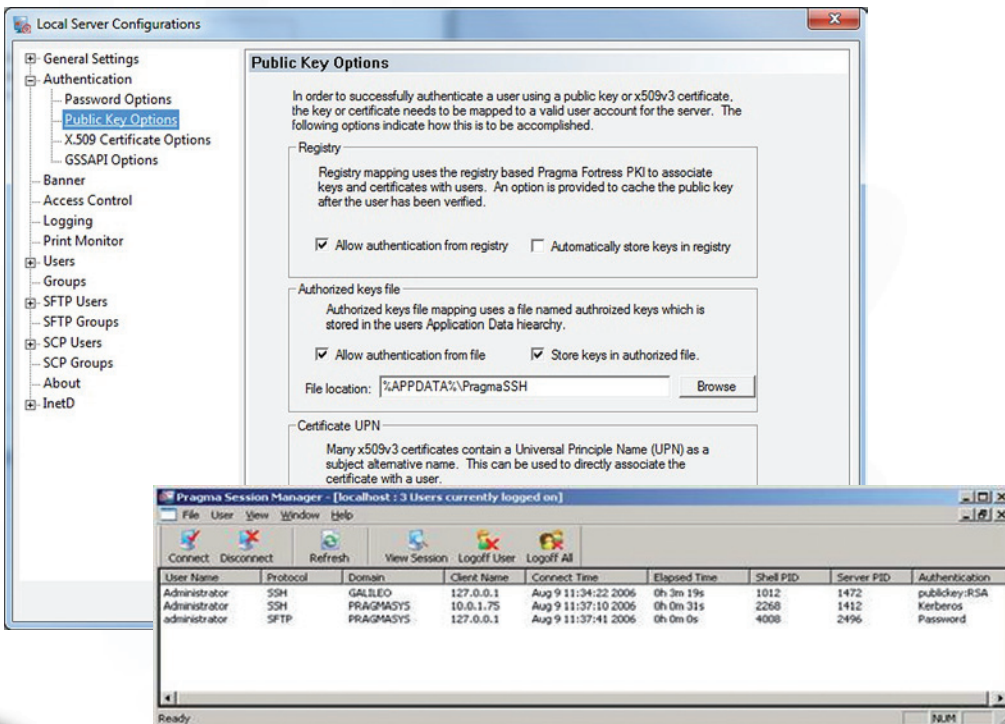
- **Unparalleled performance and scalability** – Advanced technology enables accelerated secure file transfer (SFTP) and secure file copy (SCP) at speeds up to 10 times faster than our competitors. The software is highly scalable, supporting over 1000 concurrent sessions, while other SSH Server software typically supports only 30-40 sessions.
- **Certificate / SmartCard Support** – Full x.509 v3 certificate and public key authentication. Secure access for government and secure enterprises including smart cards and DoD Common Access Cards (CAC).
- **Supports latest technology and broad range of platforms** – Runs in Windows 2019/2016/2012/R2/2012/2008 R2/2008/2003 servers and Windows 11/10/8/7/Vista/XP clients
- **Flexible SSH Client support** – Our SFTP server works flawlessly with Pragma Fortress SSH Client-Suite and is also compatible with SSH clients from other vendors. It is also optimized for use on handheld RF devices and includes special configuration and feature support for handheld clients and devices.
- **Customizable, easy to use, and streamlined deployment** – Configure the software using a dialog window or command line program. It is also easy to customize, allowing user-defined login scripts and customizable login shells.
- **Full featured** – Pragma Fortress SSH Server handles auto-loading of users' public keys; supports ANSI, VTXXX, and WYSE terminal emulation; fully supports both wired and wi-fi networks; and includes complete auditing and logging capabilities.
- **Reliable and proven** – More than a decade of engineering design and input from thousands of users have perfected Pragma Fortress SSH Server. Just install it, configure it to suit your preferences, and you will never have to think about it again.

Supported Encryption

AES128, 192, 256, Blowfish, 3DES; uses FIPS certified Pragma Cryptographic Library

Specifications

- FIPS 140-2 Certificate #3171, US Gov't UC APL, US Army TIC approved
- Runs in Windows 2019/2016/2012/R2/2012/2008 R2/2008/2003 servers and Windows 11/10/8/7/Vista/XP clients
- Certified for Windows Server 2016/2012/2008, 2008 R2, Windows Vista & Windows 7
- x86 32-bit, x64 64-bit binary choices
- 25 MB of available hard disk space
- SSH2, SFTP, SCP protocols supported
- Fortress SSH interoperates with any RFC compliant SSH clients
- Emulations supported: VT100, VT220, VT 320, ANSI, WYSE
- Stay-Linked™ Ready



Microsoft
Partner

Silver Application Integration
Silver Application Development



How to Order

Visit Pragma's web site at:
<http://www.pragmasys.com> to order online or to download a FREE fully functional evaluation copy.

To order from USA call: 1-800-224-1675

International sales call: 1-512-219-7270

Fax orders to: 1-512-219-7110

Contact Pragma for pricing and quantity discount information.

Pragma Systems, Inc.

13809 Research Blvd., Suite 675
Austin, TX 78750
USA

Tel: 1-512-219-7270

Email: sales@pragmasys.com

Website: <http://www.pragmasys.com>

Copyright © 2022 Pragma Systems, Inc. All Rights Reserved.

Pragma Fortress SSH Server

Secure Remote Access and Management Tool
for the Windows Enterprise